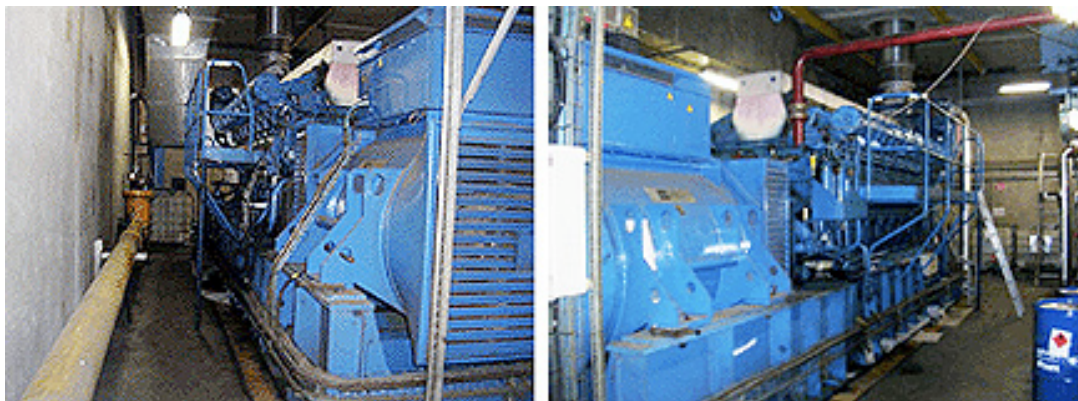
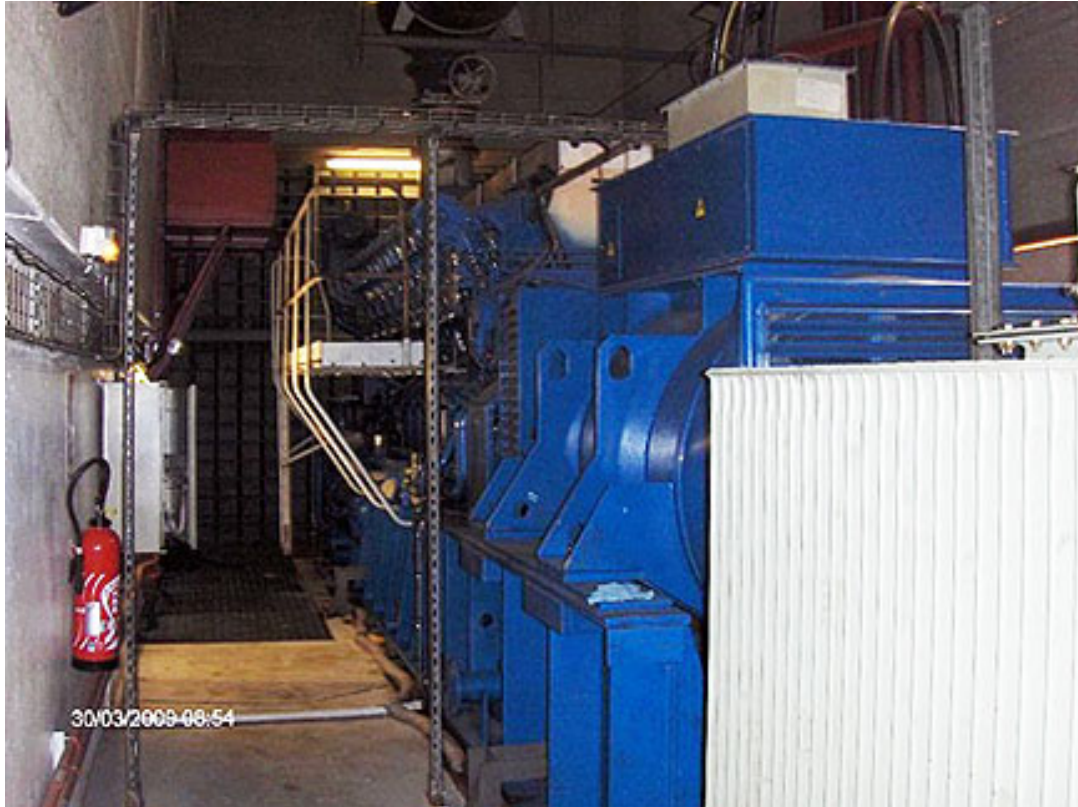




4 X Low Hours Dual Fuel Wartsila SACM 2.4MW Genset



Engines 1-3

| | |
|----------------------|---------------------|
| Engine: | Wartsila SACM |
| Quantity: | 3 |
| Model: | CR 26 V16 DF |
| Rating: | 2.4MW/3100Kva |
| Fuel: | Dual Diesel and Gas |
| Year of manufacture: | 1994 |
| Type: | 16 cylinders in V |

Engine: Wartsila SACM
Quantity: **3**
Model: CR 26 V16 DF
Rating: 2.4MW/3100Kva
Fuel: Dual Diesel and Gas
Year of manufacture: 1994
Type: 16 cylinders in V
Generators: Leroy Somer
Speed: 750 RPM
Frequency: 50 Hz
Volts: 5500V
Amps: 12,800
Total Hours: 30,000

Engine 4

Manufacturer: Wartsila
Model: CR26 V16 DF
Quantity: **1**
Rating: 3000Kva
Frequency: 50Hz
Engine Speed: 750 RPM
Year Of Manufacture: 1994
Fuel: Dual Natural Gas or Diesel
Generators: Leroy Somer
Volts: 415V.
Amps: 4100 Amps
Hours Run: 18,000Hrs (Had 24,000 Hour Overhaul bought forward)

Including:

Control Cabinet

- Synchro (Technirel RG492C)
- Speed regulation fuel/gas (Neyrpik TRAPID 1000)
- Alternator regulation
- CMR control system (Cylinder temperature)
- Cooler: Custom Coils type CC16-410DAC
- 8 fans 400V / 0.25kW
- LT Cooler: Custom Coils type CC16-470DAC
- 10 fans 400V / 0.25kW
- Air compressor:
- 40 bars, 750 Nm³/h

Transformer: GEC Alsthom (x2)

- UTHC
- 3150kVA
- 5.5 kV, 15 or 20 kV

Control Cabinet (x2):

- synchro (Technirel RG492C)
- speed regulation fuel/gas (Neyrpik TRAPID 1000)
- alternator regulation
- CMR control system (Cylinder temperature)

Cooler: Custom Coils type CC16-410DAC (x2)

- 8 fans 400V / 0.25kW

LT Cooler: Custom Coils type CC16-470DAC (x2)

- 10 fans 400V / 0.25kW

Air compressor (x2):

Cooler: Custom Coils type CC16-410DAC (x2)
• 8 fans 400V / 0.25kW

LT Cooler: Custom Coils type CC16-470DAC (x2)
• 10 fans 400V / 0.25kW

Air compressor (x2):
• 40 bars, 750 Nm³/h

Location: United Kingdom
Inspection: by appointment

